

# MORBARK® 1100 TUB GRINDER



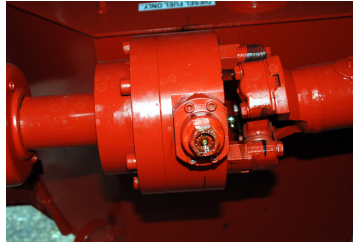
## BENEFITS

- The Morbark 1100 Tub Grinder brings price and performance together.
- This mid-sized grinder packs an impressive line of features usually only found on larger models, including the Morbark Integrated Control System to adjust feed rates of a variety of materials while optimizing fuel efficiency.
- Proven drive line protection system protects against catastrophic damage from contaminants.
- Like all Morbark equipment, the 1100 Tub Grinder is a long-lasting, durable machine backed by a world-class parts and service support team.



### Morbark Integrated Control Systems (MICS)

Monitors pressures, temperatures, clutch systems, tub rotation and engine efficiency to maximize production and engine efficiency.



### Torque Limiter

The full breakaway torque limiter system protects the engine and clutch against shock and overload without stalling the engine.



### Hydraulic Augers

Quickly remove product from beneath the mill and during material surges, pressure sensors automatically slow tub rotation to prevent plugging.



### Tub Tilt

Hydraulically tilt the tub for easy access to grates and anvil for routine maintenance.

## SPECIFICATIONS

SPECIFICATIONS MAY VARY WITH EQUIPMENT OPTIONS 11/21/14

### General

Length (transport) . . . . . 37'2"  
 Length (operating) . . . . . 56'3"  
 Height (transport) . . . . . 12'9"  
 Width . . . . . 11'2"  
 Gross weight NCL (approximate) . . 48,630 lbs.  
 Axle weight NCL (approximate) . . . 34,830 lbs.  
 Tongue weight NCL (approximate) . . 13,770lbs.  
 Gross weight WCL (optional) . . . . 59,920 lbs.  
 Axle weight WCL (optional) . . . . . 40,540 lbs.  
 Tongue weight WCL (optional) . . . . 19,380 lbs.  
 Engine . . . . . CAT or John Deere  
 Horsepower . . . . . 500 – 755 HP  
 Fuel capacity (tank) . . . . . 160 gallons  
 Hydraulic oil capacity NCL . . . . . 120 gallons  
 Hydraulic oil capacity WCL . . . . . 205 gallons

### Tub

Tub has 9' diameter at inside base, and 62" deep walls constructed of 3/8" reinforced steel plate, floor constructed of 1/2" thick wear-resistant steel, supported by 14 roller guides carried on 1 1/2" diameter shafts

### Equipment Highlights

Tub cover for debris containment  
 24" x 52" Hammermill system constructed of heavy-duty 16 1/2" diameter laser cut rotor, (13) 1 3/4" thick two-piece laser-cut rotor plates to ensure precision and enforce steel strength. The plates are keyed on a 5 7/8" diameter rotor shaft with 3 15/16" bearings direct driven at engine RPM and eight 2" hammer retaining rods.  
 Complete with (24) 2" balanced forged steel hard-surfaced hammers and (24) 2 15/16" replaceable hammerhead inserts  
 1" thick wear form steel heavy-duty screens  
 Discharge system consisting of dual hydraulically powered 14" diameter by 84" long augers and 36" x 26' belt conveyor with hydraulic fold for transport  
 Discharge height: 15'  
 Hydraulic fold for transport  
 Front hydraulic stabilizers and manual outriggers  
 Magnetized end pulley

### Options Include

Dust suppression system  
 300-gallon fuel tank in lieu of 160-gallon tank  
 Morbark reversing fan  
 Variety of screens  
 Air compressor  
 12' tub flare  
 Dual hydraulic tub drives  
 Model 250 Hydraulic Knuckleboom Loader with 23' extended boom reach, turntable bearing with 280° swing, 30" Tarantula grapple with 360° Indexator turn motor and hydraulic outriggers.  
 Stationary operator's cab and console, complete with joystick controls for loader and tub, Red Dot combination air conditioner/heater, engine gauge panel, emergency shut-down system, 6-way adjustable seat, color tinted safety glass with steel guard (as shown)



**MORBARK®**  
 BUILDING EQUIPMENT THAT CREATES OPPORTUNITIES

800.831.0042  
 989.866.2381  
 www.morbark.com

PO Box 1000  
 8507 S. Winn Rd.  
 Winn, MI 48896